

PERFORMA®

Sand Micro™
 VOC Compliant

LOW
VOC

\$\$\$\$



LEED® v4

- MR: Environmental Product Declarations (EPDs)
- MR: Sourcing Raw Materials
- MR: Material Ingredients (HPDs)
- IEQ: Daylight
- IEQ: Low-Emitting Materials
- IEQ: Prereq. Min. Acoustic Performance (Schools)
- IEQ: Acoustic Performance
- MR: PBT Source Reduction (Healthcare)
- IEQ: Interior Lighting
- EA: Prereq. Min. Energy Performance
- EA: Optimize Energy Performance
- Recycled Content
Pre: **33%** | Post: **0%**

TOOLS

Visit CertainTeed.com/Ceilings
 Download HPDs and EPDs
 LEED® Information / BIM Objects
 3-Part Specs / Data Pages



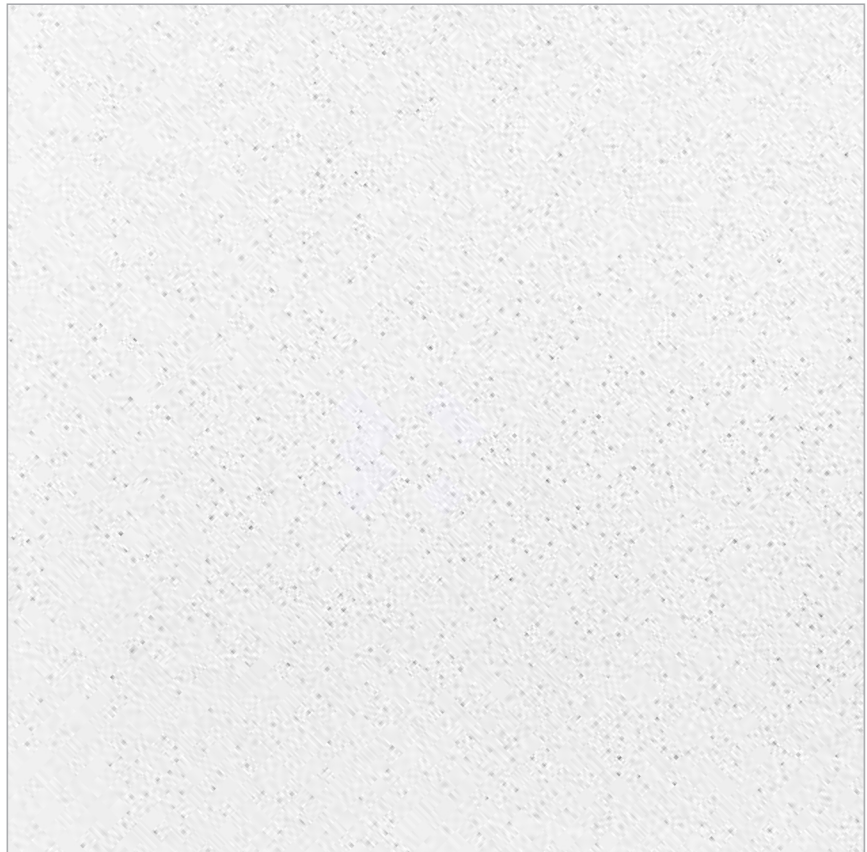
Carbon Footprint
Reduction
Rapidly Renewable
Resource Content
Recycled Content



EPD Available



HPD Available



FEATURES & BENEFITS

- Non-directional visual
- High humidity and sag resistant
- Third-party verified Environmental Product Declaration (EPD) available for this product
- Lightly textured surface provides attractive finish with excellent light reflectance and enhanced durability
- Health Product Declaration (HPD) available for this product

APPLICATIONS

- Schools
- Retail / Department Stores
- Corridors
- Hospitality Spaces
- Other Commercial Buildings / Space Applications

AVAILABLE EDGE DETAILS



Trim
15/16 Grid



Reveal
Beveled
15/16 Grid



Narrow Reveal
Corner Bevel
9/16 Grid



Narrow Reveal
Corner Bevel
9/16 Grid Bolt Slot



Narrow Reveal
Corner Bevel
9/16 Grid Tier Drop



Sand Micro™ Reveal (SHM-154)

ATTRIBUTES

| | DIMENSIONS (INCHES) | EDGE DETAIL | UL CLASSIFIED NRC | CAC | EPD AVAILABLE | HPD AVAILABLE | SAG RESISTANT | MOLD RESISTANT | LR | WASHABLE | FIRE CLASS (ASTM E1264) | EMISSION COMPLIANT | RECYCLED CONTENT |
|--------------------|------------------------|----------------|----------------------|-----|------------------|------------------|------------------|-------------------|------|----------|----------------------------|-----------------------|---------------------|
| SAND MICRO™ | | | | | | | | | | | | | |
| SHM-157 | 24 x 24 x 5/8 | Trim | 0.50 | 33 | Yes | Yes | Yes | BioShield | 0.88 | — | Class A | Certified | 33% |
| SHM-154 | 24 x 24 x 5/8 | Reveal | 0.50 | 33 | Yes | Yes | Yes | BioShield | 0.88 | — | Class A | Certified | 33% |
| SHM-150 | 24 x 24 x 5/8 | Narrow Reveal | 0.50 | 33 | Yes | Yes | Yes | BioShield | 0.88 | — | Class A | Certified | 33% |
| SHM-197 | 24 x 48 x 5/8 | Trim | 0.50 | 35 | Yes | Yes | Yes | BioShield | 0.88 | — | Class A | Certified | 33% |
| SHM-194 | 24 x 48 x 5/8 | Reveal | 0.50 | 35 | Yes | Yes | Yes | BioShield | 0.88 | — | Class A | Certified | 33% |
| SHM-190 | 24 x 48 x 5/8 | Narrow Reveal | 0.50 | 35 | Yes | Yes | Yes | BioShield | 0.88 | — | Class A | Certified | 33% |

CAN'T FIND A SIZE? Contact your local Sales Representative or call 800-233-8990

PHYSICAL DATA

MATERIAL
Mineral Fiber

ASTM E1264 CLASSIFICATION
Type III, Form 2, Pattern C E

FIRE CLASS (ASTM E1264)
Tested according to ASTM E84 & CAN S102
Flame Spread: 25 or less
Smoke Developed: 50 or less

VOC EMISSIONS
Independently certified compliant with California
Department of Public Health CDPH/EHLB/Standard
Method Version 1.1, 2010.

MOLD/MILDEW RESISTANCE
BioShield® treatment included for added mold and
mildew resistance.

MAINTENANCE
Wipe with a soft cloth or vacuum with brush attachment.

WARRANTY
10-year 104/90 Limited Warranty